

Space is limited to 80 attendees.

Register now!

Birds. At Home, On the Range. June 5 - 6, 2009

REGISTRATION FORM

Name: _____ Organization: _____

Address: _____ City/State/Zip: _____

Phone: _____ Email: _____

Number in Party: _____ ADULTS _____ STUDENTS

Interested in earning college graduate credit? YES NO *Contact Dr. Kristel Bakker: 605 256-5182 or Kristel.Bakker@dsu.edu.*

Interested in transportation from your motel (in Kadoka or Murdo) to Rasmussen-Lehman 33 Ranch? YES NO

Please mail registration form and \$20 per person OR \$35 per couple (if accompanying a student) to:

**Judge Jessop
24690 299th Ave. Presho, SD 57568
(605) 280-0127**

For planning purposes, registration form and fee must be received by June 1, 2009.

**Driving Directions
to Rasmussen-Lehman 33 Ranch:**

From Murdo – Travel south on Hwy. 83 to White River (approx. 24 miles). Turn west/right on Hwy. 44. Continue traveling west for 20 miles.

Drive past mile marker 179.
Turn right/north at the next gravel road.
Continue 3 miles north and 1 mile west.

From Kadoka – Travel south on Hwy. 73 to Hwy. 44. Turn left/east on Hwy. 44 and continue east for 20 miles. Drive past mile marker 178.
Turn left/north at the next gravel road.
Continue 3 miles north and 1 mile west.

Shuttle service is available from Kadoka and Murdo to Rasmussen-Lehman 33 Ranch for this event. Please indicate your interest in the shuttle on the registration form.



Burrowing Owl
Photo by Doug Backlund

For more information about the tour, contact:
South Dakota Grassland Coalition

Justin "Judge" Jessop

PH: (605) 280-0127

Email: jjessop@sdconservation.org

**Birds.
At Home,
On the Range.
Bird Watching Tour**



Blue Grosbeak
Photo by Doug Backlund

**June 5 - 6, 2009
Rasmussen-Lehman 33 Ranch
Belvidere, SD**

Hosted by:
South Dakota Grassland Coalition
www.SDGrass.org

Birds. At Home, on the Range.

ITINERARY

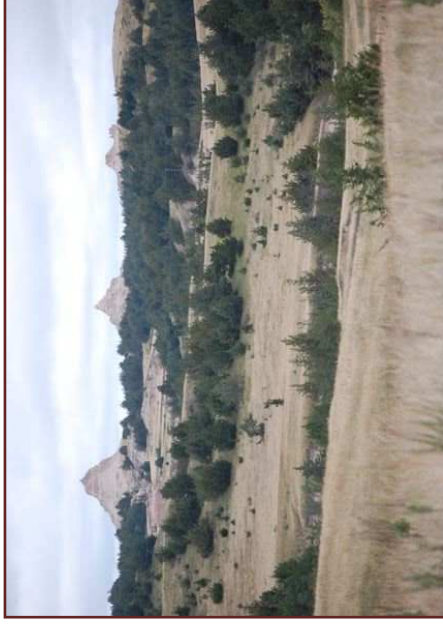
June 5, 2009

- Gather at Rasmussen-Lehman 33 Ranch 3:30 - 4 pm
 Welcome/Review of Schedule 4:00 - 4:15
 - *Dave Steffen, SD Grassland Coalition*
 Introduction to the SD Grassland Coalition 4:15 - 4:30
 - *Lavern Koch & Jim Faulstich, SD Grassland Coalition*
 33 Ranch History 4:30 - 5:00
 - *Dan Rasmussen, Co-Owner, Rasmussen-Lehman 33 Ranch*
 Bird Identification 5:00 - 5:30
 - *Silka Kempema, South Dakota Game, Fish & Parks*
 - *Nancy Drilling, Rocky Mountain Bird Observatory*
 Plant Identification 5:30 - 6:00
 - *Amy Lehman, Co-Owner, Rasmussen-Lehman 33 Ranch*
 - *Dave Ode, South Dakota Game, Fish & Parks*
 BBQ in the Badlands 6:00 - 6:45
 Habitat speaker "Grassland Birds" 6:45 - 7:30
 - *Dr. Kristel Bakker, Dakota State University*
 Split into groups with leaders
 Bird watch/record species (optional) 7:30 - 7:45
 7:45 - 8:30

June 6, 2009

- Sunrise Coffee and Rolls 6:00 - 6:30 am
 Bird Watch and Record Species in Groups 6:30 - 10:15
 Groups Rotate Through Different Stations
 - Bird Watching
 - Bird Banding
 - Invertebrate Trapping
 Coffee, Rolls and Discussion 10:15 - 10:30
 Bird Photography 10:30 - 11:00
 - *Doug Backlund, South Dakota Game, Fish & Parks*
 The Prairie is My Garden 11:00 - 11:30
 - *Lisa Dorschner, South Dakota Ag in the Classroom*
 Birds and Cows: Putting Them Together 11:30 - 12:00
 - *Dr. Kristel Bakker, Dakota State University*
 Lunch and Slideshow 12:00- 12:45
 The Grass Manager's View 12:45- 1:15
 - *Dan Rasmussen, Co-Owner, Rasmussen-Lehman 33 Ranch*
 Closing Comments and Discussion 1:15 - 2:00

- ★ *Bring your digital camera to take photos during the tour!*
- ★ *All times are Central Daylight Time.*



Rasmussen-Lehman 33 Ranch, located near Belvidere, SD, is made up of a diverse landscape suited for providing habitat for livestock and birds.

Welcome to south central South Dakota! The unique geographical landscapes, mixed grass prairies and trees found here provide habitat to numerous species of waterfowl and grassland birds.

The South Dakota Grassland Coalition invites you to take a journey to view the abundant populations of birds that make their home in this region. Learn how rangeland management plays an important role in the state's agricultural industry as well as provides an exceptional environment for South Dakota's native feathered friends.

The two-day *Birds. At Home, on the Range* tour will take you to Rasmussen-Lehman 33 Ranch, located near Belvidere, SD. While here, you'll watch and record bird species, hear presentations from land owners and conservation experts. New this year is the opportunity to earn a college graduate credit for participating in the bird tour. Please indicate your interest in earning credits on the registration form.

Space is limited to 80 participants, so register now! To pre-register, complete the attached registration form and mail your registration fee to the South Dakota Grassland Coalition. For more information, call Justin "Judge" Jessop, (605) 280-0127 or email jjessop@sdconservation.org

Cost to Participate:
 \$20 per person
 \$35 per couple if accompanying a student
 Students - high school age and under - are free
 * *Registration fee includes birding materials, transportation, and meals.*

To Register:
 Complete the registration form and mail to
 Justin "Judge" Jessop
 24690 299th Ave.
 Presho, SD 57568

Lodging is not included in the registration fee.

Lodging in the area:
 Days Inn Range Country - Murdo
 605-669-2425 or 800-329-7466
www.daysinnrangecountry.com

H&HEI Centro Hotel - Kadoka
 605-837-2287 or 800-837-8011

Shuttle service is available from hotels to Rasmussen-Lehman 33 Ranch for this event.

Cancellation Policy:
 No refunds after June 1, 2009.



Grasshopper Sparrow
 Photo by Doug Backlund